

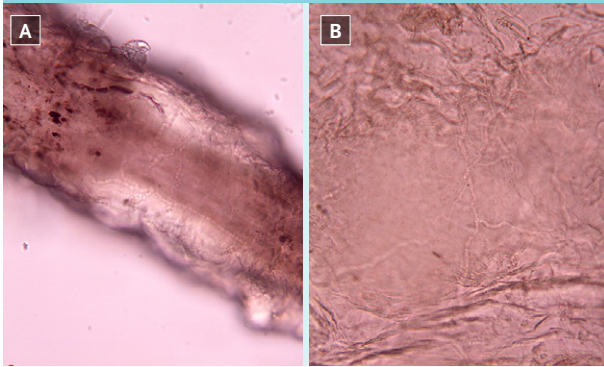
## ANSWER TO PHOTO QUIZ (PAGE 125)

## FACIAL RASH AND ALOPECIA IN A PATIENT WITH SYSTEMIC LUPUS ERYTHEMATOSUS

## DIAGNOSIS

Endothrix and hyphae were found on microscopic examination of the hair (figure 2A) and skin scrapings (figure 2B). Cultures of the hair and the scrapings of skin grew *Trichophyton tonsurans*. A diagnosis of tinea capitis and tinea faciei was made. She achieved clinical and mycological clearance after being treated with oral terbinafine 250 mg/day for six weeks.

**Figure 2.** Microscopic examination of the hair (A) and facial rash (B) showed endothrix and hyphae



Tinea capitis is one of the common causes of hair loss in children; it is rare in adults.<sup>1</sup> However, tinea capitis is far from unusual in immunocompromised adults.<sup>2,3</sup> Hair loss is a common cutaneous adnexal manifestation in systemic lupus erythematosus patients (20-60%).<sup>4</sup> It may be correlated with the disease activity index in systemic lupus erythematosus,<sup>5</sup> therefore tinea capitis should be carefully differentiated from primary hair loss in patients with systemic lupus erythematosus using immunosuppressive drugs. Tinea faciei may be atypical in immunocompromised individuals.<sup>4</sup> The lesions of tinea faciei should be differentiated from the cutaneous lesions of lupus.

## REFERENCES

1. Patel GA, Schwartz RA. Tinea capitis: still an unsolved problem? *Mycoses*. 2011;54:183-8.
2. Yu J, Chen W, Wan Z, Li RY. Adult tinea capitis due to *Trichophyton violaceum* in China. *Mycopathologia*. 2004;157:49-52.
3. Lova-Navarro M, Gomez-Moyano E, Martinez Pilar L, et al. Tinea capitis in adults in southern Spain. A 17-year epidemiological study. *Rev Iberoam Micol*. 2016;33:110-3.
4. Ramos-e-Silva M, Pirmez R. Red face revisited: Disorders of hair growth and the pilosebaceous unit. *Clin Dermatol*. 2014;32:784-99.
5. Sato JO, Corrente JE, Saad-Magalhaes C. Chronic active disease pattern predicts early damage in juvenile systemic lupus erythematosus. *Lupus*. 2015;24:1421-8.